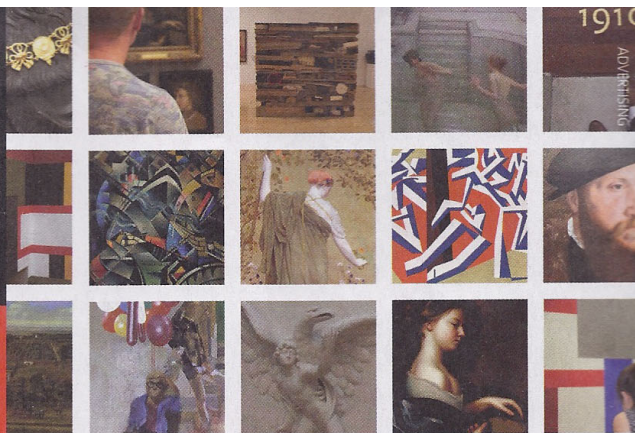


Time Out

London



Art nuemo2

Critic's choice



Martin Coomer picks the best shows closing this week



NIGEL COOKE

Last chance: It's business as usual for Cooke which, in his case, means paintings featuring severed heads and other beautifully dystopian schlock. *Modern Art*. ▶ Sat Nov 16.

HURVIN ANDERSON

What price paradise? These garden paintings have a choked luxuriance that leaves you feeling distinctly edgy. *Thomas Dane*. ▶ Sat Nov 16.

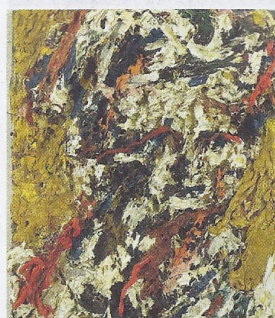
Raw Truth: Auerbach – Rembrandt

★★★

Ordo vas. ▶ Dec 1.

'In conversation' is an odd way to describe the act of hanging paintings by different artists next to one other, as the gallery has done here. Is there some kind of dialogue between work from the 1960s by the radical modern British painter Frank Auerbach and that of seventeenth-century Dutch master Rembrandt van Rijn? Are they really having a chat? If anything, this is more of a séance, with Auerbach reaching out to ol' Rembo through some artistic ouija board.

The 'conversation' here is at its most fluid when the talk turns to portraiture. Rembrandt's tiny 'Portrait of Dr Ephraim Bueno' from 1645-1647 (pictured, right) hangs between two Auerbach portraits of Estela West made in 1964 ('Head of EOW' pictured, left). The quiet gaze



of Dr Bueno is echoed in West's sunken eyes, lost under inches of paint. The masterful intensity of Rembrandt's delicate touch contrasts with Auerbach's frighteningly thick layers of near-abstract.

But Rembrandt's beautifully atmospheric 'The Three Trees' etching (1643) is dwarfed by three of Auerbach's stunning and immense landscapes. It's hard to see the link between the intricate subtlety of the Dutch master's work and the Brit's huge, blobby canvases of beige, black and maroon, even though they



share a similar darkness.

Often, it's up to us to make the connections – as when Auerbach's 'The Sitting Room' (1964) is hung between a painting and etching by Rembrandt depicting Joseph telling his dream to his family. There's modern, gestural painting on the one hand, religious-themed baroque art on the other. Both are beautiful but drawing parallels feels forced. *Eddy Frankel*

THE BOTTOM LINE Stunning paintings that aren't necessarily on speaking terms.

Art

Masterpieces of Chinese Painting 700-1900

26 October 2013-19 January 2014

A show of perpetually positive designs!

★★★★★

V&A

BOOK NOW www.vam.ac.uk
V&A Members go free
#ChinesePainting
South Kensington / Knightsbridge

Supported by the Friends of the V&A

Travel Partner: Restaurant Partner:

VIKING TRAVEL CENTRE

Opening this week

Alan Cristea 31 and 34 Cork St, W1S 3NU. 7439 1866, www.alancristea.com. ☎ Green Park. Mon-Fri 10am-5.30pm; Sat 11am-2pm.

Tom Wesselmann: The Late Prints Reclining bodies, bowls of fruit and lush green vistas are given the pop treatment in these prints by the American artist who transforms the classical themes of still life, nude and landscape into colourful explosions. Bright and cheeky, this show will rid anyone of the winter blues. *Thu Nov 14 ▶ Dec 21.*

Lisson Gallery 27-29 Bell St, NW1 5DA. 7724 2739, www.lissongallery.com. ☎ Edgware Rd. Mon-Fri 10am-6pm; Sat 11am-5pm.

Nostalgic for the Future Just two years off their fiftieth anniversary, Lisson Gallery celebrates this milestone by looking back at the artists whose careers they've nurtured since the gallery's inception – including John Latham, Richard Long and Richard Wentworth – and looking forward with their younger artists – such as Ceal Floyer, Ryan Gander and Haroon Mirza. *Thu Nov 14 ▶ Jan 11.*

NECROPOLIS
An art expo by **Cherry Pickles & Alexander Lumsden**

MENIER GALLERY 11-16 NOV

Special Guests: IASM
performing 'Resonant Cityscape'
Fri 15 Nov 6.30PM
www.irasleepingmood.com

LONDON BRIDGE

National Portrait Gallery
St Martin's Place, WC2H 0HE. 7306 0055, www.npg.org.uk. ☎ Charing Cross. Mon-Wed, Sat, Sun 10am-6pm; Thu, Fri 10am-9pm. £3, concs £2.

Taylor Wessing Photographic Portrait Prize 2013 Showcase of the most talented and exciting emerging photographers, students, amateurs and established professionals working across the globe. *Thu Nov 14 ▶ Feb 9 2014.*

For all of this week's exhibitions, head to timeout.com/bestnewart